



2024 Thursday Night Series Sailing Instructions & Handbook

Spring Series:

Thursday, May 23, 2024
Through
Thursday, July 25, 2024

Summer Series:

Thursday, August 1, 2024
Through
Thursday October 3, 2024

The JYC Season Pass

Sign up and pay for the entire 2024 Thursday Night season (19 races), and we'll include entry to both the JYC Regatta Weekend and Phil Small Regatta, free of charge.

What's Changed

- Updated 2024 JYC Regatta Committee Members table on page 3 to reflect current membership and officers
- Updated section 3.3 Rating certificates are 2024 PHRF NE.
- Updated section 7.3 and removed the paragraph, “At the discretion of the JYC Race Committee, fleet starts may be combined. Combined starts will be broadcast on VHF channel 72 and affected class flags will be flown at the warning signal.” There will be no combining classes at the start.
- Updated explanation of JYC Season Pass benefit that weekend races are free, and that there are 19 Thursday Night races in 2024 season.
- Updated the table of fleet splits to:

Class	PHRF-NE Racing Rating	Flag
A	Below 100	“A” (Alpha)
J105	J105 Class	Class Flag or “J” (Juliette)
B	101 through 155	“B” (Bravo)
C	156 +	“C” (Charlie)
E	Jib and Main (JAM)	“E” (Echo)

2024 JYC Regatta Committee Members

Name	Boat Name
Jason Balich	Over Achiever
Brant Binns, <i>Handicapper</i>	Scout
C.B. Currier, <i>Vice Chair</i>	Rhubarb
Tom Dooley, <i>Secretary</i>	Petrel
Chris Exley, <i>Chair</i>	
Bill Foye	Montauk
Charles Grant	Spirit
Brian Gibbs, <i>Boat Manager</i>	Blind Faith
Tyler Jupp	Spirit
Chuck Kornley	Satisfaction
Mike Maxwell, <i>Treasurer</i>	Shenanigan
Shan McAdoo	
Ray Mount	Break Away
Dan Poranski	Maniac

If you have any questions, problems, or concerns, please contact one of the above committee members or send an email to: asktherc@jycracing.org

Jubilee Yacht Club 2024 Thursday Night Series Sailing Instructions

1. Rules

- 1.1. The JYC Thursday Night Series will be governed by the 'rules' as defined in the Racing Rules of Sailing.
- 1.2. The appropriate sections of the current Mass Bay Sailing Association (MBSA) Yearbook except as modified herein, and these Sailing Instructions will apply.

2. Notice(s) to Competitors

- 2.1. Notices to competitors will be posted on the home page at www.jycracing.org.

3. Entries

- 3.1. Eligible boats may be entered in the entire Thursday Night Series, the Spring or Summer series separately, or for any individual Thursday Night race by completing registration with the JYC Race Committee. The entry fee, payable to the JYC Regatta Committee, must accompany the Entry Form. No refunds will be made if an entry is withdrawn after the start of a Series or individual race. The JYC Race Committee, at its discretion, may charge an additional fee for late entries.
- 3.2. Handicap ratings to be used shall be Performance Handicap Racing Formula – New England (PHRF-NE).
- 3.3. Each boat entering handicap racing shall be listed on the 2024 PHRF-NE Valid List. Boats not in compliance with this instruction will not have their race(s) scored.
- 3.4. One-design classes may be specified at the discretion of the JYC Race Committee provided enough entries are received (target five boats). No handicap certificate will be required for boats entering a one-design class.

4. Changes to Sailing Instructions

- 4.1. Any change to the sailing instructions will be posted before 0900 on the day it will take effect, except that any change to the schedule of races will be posted by 2000 on the day before it will take effect.

5. Signals Made Ashore

- 5.1. No signals will be made ashore.

6. Schedule of Races

- 6.1. The Thursday Night Series will include of twenty (20) races including a pursuit race consisting of two separately scored series of races.
 - 6.1.1. The first Thursday night race on Thursday, May 23, 2024 will be a pursuit

race. These sailing instructions, except as modified by the Thursday Night Pursuit Race Sailing Instructions (Appendix B of this document), will apply.

- 6.1.2. The Spring Series will consist of nine races commencing on Thursday, May 23, 2024 and conclude after the tenth race on Thursday, July 25, 2024. **There will be no race on Thursday, July 4, 2024.**
- 6.1.3. The Summer Series will consist of ten races commencing on Thursday, August 1, 2024 and conclude after the tenth race on Thursday, October 3, 2024.

6.2. The scheduled time of the warning signal for the first race each day is 1810.

7. Classes and Class Flags

- 7.1. Each boat shall display, from her backstay or a stern staff, the class flag for the class in which she is competing prior to her warning signal until she finishes.
- 7.2. For the 2024 Season, the Jib and Main (JAM) class will again be offered. The class will be designated as Class “E”. Boats registered for this class are all set for the series; boats wishing to compete in this class on an ad-hoc basis must declare their intention to the JYC Race Committee at the beginning of each race. Boats racing in this class will be scored using their PHRF-NE 'Cruising' rating.
- 7.3. The classes (i.e. fleet breaks) for the Thursday Night Series will be announced at the first race of the Series and will be determined by the number and ratings of boats registering. The classes will remain in place for both the entire Series and will be approximately as follows:

Class	PHRF-NE Racing Rating	Flag
A	Below 100	“A” (Alpha)
J105	J105 Class	Class Flag or “J” (Juliette)
B	101 through 155	“B” (Bravo)
C	156 +	“C” (Charlie)
E	Jib and Main (JAM)	“E” (Echo)

- 7.4. The 2024 Thursday Night Series is open to entries sailed by no more than two (2) persons (double-handed) subject to the following conditions:
 - 7.4.1. A boat wishing to sail double-handed must declare herself as such for an entire Series by notifying the JYC Race Committee of her intent to race double-handed.
 - 7.4.2. Double-handed boats are reminded that rule 7.2 of these instructions applies.
 - 7.4.3. Double-handed boats must possess a 2024 PHRF-NE Short-handed certificate. Double-handed boats will be scored based on the short-handed rating.

7.4.4. Double-handed boats will start with the class according to their adjusted (per 7.5.3) PHRF-NE racing rating.

7.4.5. Double-handed boats are not eligible for the Jib & Main Class "E".

7.4.6. The use of an autopilot is permitted.

7.5. The use of powered winches is allowed without penalty. This alters RRS Rule 52.

8. Racing Area

8.1. The location of the racing area will be, more or less, the area known as Salem Sound and represented approximately by the area shown in appendix A.

9. Courses: Courses will be determined using one of the following methods:

9.1. Variable Course - The course(s) will be signaled and marks will be rounded in accordance with MBSA General Sailing Instruction 11. A variable course will be signaled by letters or numbers displayed by the JYC Race Committee boat, either in a rack or by code flags. Marks shall be rounded in the order displayed, reading from top to bottom.

9.1.1. Variable course mark listing includes provision for the use of portable marks. When a portable mark is used, distance and bearing to the mark will be displayed from the JYC Race Committee boat.

9.1.2. A red placard displayed in the rack of the JYC Race Committee boat signals that all marks are to be rounded to port.

9.1.3. A green placard displayed in the rack of the JYC Race Committee boat signals that all marks are to be rounded to starboard.

9.2. Change of Course shall be signaled by showing all of the marks of the course in the JYC Race Committee boat course rack from start to finish including marks already rounded and the class flag(s) will be flown to indicate which fleets courses are being changed. The "C" (Charlie) flag shall be flown and repetitive sounds made for each boat (changes RRS 33). If the course is changed, all roundings will be mark left to port. The JYC Race Committee will attempt to announce the course change on VHF. Not recognizing or comprehending the course change from the signals or radio announcement shall not be grounds for redress (changes RRS 62.1(a)).

10. Marks

10.1. For Variable Courses, marks will be as listed in appendix A.

11. The Start

11.1. Races will be started using RRS 26.

11.2. The starting line will be between an orange flag displayed on the JYC Race Committee boat and a nearby mark.

11.3. Starts will usually be in the vicinity of Curtis Point; however, the JYC Race Committee boat may elect to start from any one of the marks listed in Appendix A.

11.4. Class starts will be in the following order:

- 1: Class A
- 2: Class J/105
- 3: Class B
- 4: Class C
- 5: Class E

12. Recalls

12.1. The JYC Race Committee will attempt to hail premature starters in all fleets on VHF channel 72. The failure to hail premature starters, the hail of some, but not all premature starters, or the untimely hail of premature starters shall not be grounds for redress (changes RRS 62.1(a)).

13. The Finish

13.1. The finishing line will be between an orange flag displayed on the JYC Race Committee boat and a nearby mark of the course.

13.2. When approaching the finishing line, each boat shall hail the JYC Race Committee boat and identify herself by her sail number. Failure to do so may result in a boat not being scored.

13.3. Each boat is responsible for taking her own time and, if possible, the name and sail numbers of the boats immediately ahead and astern. This information shall be provided to the JYC Race Committee upon request.

14. Retiring

14.1. If a boat retires from a race, for any reason, she must call the JYC Race Committee on VHF channel 72, or otherwise inform the JYC Race Committee of their intention to retire, and receive acknowledgement from the JYC Race Committee of her retirement. This must be done as soon as practicable. Boats failing to inform the JYC Race Committee of their retirement will be scored DNF for that race and will have twenty (20) seconds subtracted from their PHRF-NE handicap for the race on the next calendar week.

15. Penalties

15.1. A boat may take a One-Turn Penalty when she may have broken one or more rules of Part 2 in an incident while *racing*. She may take a One-Turn Penalty when she may have broken rule 31. This changes RRS 44.1. All other provisions of RRS 44.1 remain unchanged.

15.2. The first place boat in each fleet will have twenty (20) seconds subtracted from their PHRF-NE handicap for the next race. The penalties will not be carried between the Spring and Summer series. The penalties do not apply to any specified one-design fleet(s).

16. Time Limits

- 16.1. The time in which the first boat in any class must finish in order to qualify the race as a valid race for that class, is two (2) hours after her starting signal.
- 16.2. All other boats in a class must finish within two (2) hours and thirty (30) minutes of her starting signal. Boats that do not finish within this time will be scored DNF.

17. Protests

- 17.1. Protest forms must be filed with the JYC Race Committee no later than 30 minutes after the JYC Race Committee boat has docked.
- 17.2. Protests pending will be posted on the notice board outside the Regatta Committee Office on first floor of Jubilee Yacht Club.
- 17.3. Participants in the hearings must be available within 30 minutes of the expiration of the protest deadline.
- 17.4. All JYC protest hearings are open. Open hearings are subject to the following rules:
 - 17.4.1. The hearing may be closed at the discretion of the protest committee or JYC Race Committee.
 - 17.4.2. All observers must maintain absolute silence.
 - 17.4.3. Witnesses who will be called by a party to the protest will not be allowed in the hearing room except when they are called to witness. Once a person enters the hearing as an observer, they are disqualified from serving as a witness. Skippers are to ensure that their witnesses are kept outside during the hearing.
 - 17.4.4. The protest committee may elect to confer in private in making their findings. After their findings are complete, the hearing will be reopened for the final decision.
- 17.5. Arbitration: The rules of Appendix T Arbitration are hereby added to these instructions. This can eliminate the need for protest hearings by offering a simplified review of the protest between the two parties and an experienced judge. After hearing both parties the judge offers an opinion of how the protest committee is likely to decide the protest. The appendix then offers ways to settle the dispute, allow a boat that broke a rule a lesser penalty than disqualification, and conclude the protest.
 - 17.5.1. After the arbitrator offers an opinion,
 - a. a boat may take a Post-Race Penalty, and
 - b. a boat may ask to withdraw her protest. The arbitrator may then act on behalf of the protest committee in accordance with rule 63.1 to allow the withdrawal.
 - 17.5.2. Unless all protests involving the incident are withdrawn, a protest hearing

will be held.

18. Scoring

- 18.1. Races will be scored using a Time-on-Distance method, in which the handicap is multiplied by the distance of the race, resulting in a time adjustment to the finishing time. A valid PHRF-NE certificate will determine handicaps used for the Series.
- 18.2. The results for either the Spring or Summer Series will be based on the highest point total for the best qualifying races for the Series. Points are awarded using the Rinderle B Table as applied to the final results of each race. To qualify, a yacht must sail in at least the minimum qualifiers according to the table that follows. "DNF" is scored as 5 points, and "DSQ" is scored as 0 points.

Number of Starters

1	2	3	4	5	6	7	8	9	10	11	12	13	14	15	16	17	18	19	20	Place
79.1	81.3	83.6	85.8	87.8	89.6	91.2	92.6	93.9	95.0	96.0	96.9	97.6	98.2	98.7	99.2	99.5	99.8	100.0	100.1	1
	10.5	43.0	56.8	65.0	70.7	75.0	78.5	81.3	83.6	85.6	87.3	88.7	89.9	91.0	91.9	92.7	93.3	93.9	94.3	2
		10.5	33.7	46.9	55.7	62.1	67.1	71.2	74.5	77.3	79.6	81.6	83.3	84.8	86.1	87.2	88.1	89.0	89.7	3
			10.5	28.7	40.6	49.2	55.8	61.1	65.3	68.9	71.9	74.5	76.7	78.6	80.3	81.7	83.0	84.1	85.0	4
				10.5	25.6	36.3	44.5	50.9	56.2	60.6	64.3	67.4	70.1	72.4	74.5	76.2	77.8	79.1	80.4	5
					10.5	23.4	33.2	40.8	47.1	52.2	56.6	60.3	63.5	66.2	68.6	70.7	72.6	74.2	75.7	6
						10.5	21.8	30.7	37.9	43.9	48.9	53.2	56.8	60.0	62.8	65.3	67.4	69.3	71.0	7
							10.5	20.6	28.8	35.5	41.2	46.1	50.2	53.8	57.0	59.8	62.3	64.4	66.4	8
								10.5	19.6	27.2	33.5	38.9	43.6	47.7	51.2	54.3	57.1	59.5	61.7	9
									10.5	18.8	25.9	31.8	37.0	41.5	45.4	48.8	51.9	54.6	57.1	10
										10.5	18.2	24.7	30.4	35.3	39.6	43.4	46.7	49.7	52.4	11
											10.5	17.6	23.7	29.1	33.8	37.9	41.6	44.8	47.8	12
												10.5	17.1	22.9	27.9	32.4	36.4	39.9	43.1	13
													10.5	16.7	22.1	26.9	31.2	35.0	38.4	14
														10.5	16.3	21.5	26.0	30.1	33.8	15
															10.5	16.0	20.9	25.2	29.1	16
																10.5	15.7	20.3	24.5	17
																	10.5	15.4	19.8	18
																		10.5	15.2	19
																			10.5	20

Finish positions are based upon corrected time.

"DNF" is scored 5 points
 "DSQ" is scored 0 points

If there are more than 20 starters in one class, the MBSA scorer will assign the correct number of points based upon the Rinderle formula and all yachts will be informed.

- 18.3. The number of qualifiers required are based on the number of races sailed by a given fleet for the Series based on the following table:

Races Sailed by Fleet	Qualifiers Required
10	6
9	6
8	5

7	4
6	4
5	3
4	3
3	3
2	No Series
1	No Series

18.4. JYC Race Committee members whose boats do not race on the night the member has JYC Race Committee duty will receive a scoring adjustment at the end of the Series. The race(s) will be scored as the average of that boat's completed races during the Series.

19. Safety

19.1. The JYC Race Committee boat will monitor VHF radio channel 72.

19.2. The JYC Race Committee limits its radio operations to closely follow the recommendations of US Sailing under the Racing Rules of Sailing. At times of busy activity (e.g. course selection, starts and finishes), the JYC Race Committee boat may be restricted in its ability to respond to VHF hails. Boats are requested to limit their calls to the JYC Race Committee boat during times of busy activity to emergency communications only.

19.3. Boats shall check in with the JYC Race Committee boat before her first warning signal each day by VHF channel 72, or by sailing past the JYC Race Committee boat, and stating her sail number and the number of souls on board, and receive acknowledgement from the JYC Race Committee of her check in. Boats that fail to check in will receive a 20% scoring penalty for that race with the number of places calculated in accordance with RRS 44.3(c). This changes MBSA GSI 21.2.

20. Prizes

20.1. Prizes for each race of the Series will be as follows and are awarded after each race:

20.1.1. First place trophy for each class with 1, 2, or 3 boats.

20.1.2. First and Second place trophy for each class with 4 boats.

20.1.3. First, Second, and Third place trophy for each class with 6 or more boats.

20.2. Trophies for the Spring and Summer Series overall winners are presented annually at the JYC Awards banquet. Awards for each class are according to the same restrictions as above.

21. Disclaimer of Liability

21.1. Competitors participate in the races and the Series entirely at their own risk. See rule 4, Decision to Race. The JYC Regatta Committee, and the JYC, will not accept any liability for material damage or personal injury or death

sustained in conjunction with, prior to, during, or after the regatta.

Appendix A – Variable Marks

Mark Letter	Name	Location/Description	Latitude	Longitude
A	R N "2"	Beverly Entrance	42° 32.38'	70° 51.52'
B	G "15" Q G	Quick Flash, Hospital Point	42° 32.48'	70° 50.73'
C	R "16" FI R 4s	Between Haste & Salem Willows	42° 32.23'	70° 51.13'
D	G "13" FI G 4s	Slow Flash, Curtis Point	42° 32.58'	70° 50.35'
E		Portable Start		
F		Portable Finish		
G	R N "14"	Near Mingo Beach	42° 32.73'	70° 50.35'
H	G C "7"	Near Haste & Outfall	42° 32.17'	70° 50.02'
I	G C "5"	Coney Ledge	42° 31.67'	70° 49.78'
J	R N "6"	West end tail of Eagle Bar	42° 31.80'	70° 49.28'
K	G "3" FI G 4s	Chappel Ledge, near Gray Rock	42° 31.13'	70° 49.47'
L	R "4" FI R 4s	Eagle Island	42° 31.28'	70° 49.10'
M	R N "2"	Archer Rock, West of Cat Island	42° 30.72'	70° 49.42'
N	RG "FR" FI (2+1) R 6s BELL	Marblehead Bell	42° 30.25'	70° 49.08'
O	G C "7"	Northeast of Cat Island	42° 30.98'	70° 48.78'
P	R N "6"	Between Eagle Island & Bakers Island	42° 31.68'	70° 48.23'
Q	G C "5"	Pope Head	42° 31.68'	70° 47.97'
R	R N "4"	South of Hardy Rocks	42° 31.93'	70° 48.02'
S	G "9" Q G BELL	Powers Rock	42° 32.40'	70° 47.28'
T		Twice Around		
U	R "10" FI R 2.5s	West of Misery Island	42° 32.58'	70° 48.03'
V	G "11" FI G 4s	Bowditch Ledge	42° 32.55'	70° 48.55'
W		Portable Windward		
X	R "12" FI R 4s	John Ledge, NW of Bowditch Ledge	42° 32.63'	70° 48.88'
Y	G "17" FI G 2.5s	Near Salem Willows	42° 31.93'	70° 51.35'
Z	G "21" FI G 4s	Near Winter Island	42° 31.32'	70° 52.02'

Note: Latitude and longitude are approximate and should be used for reference only.

Appendix B – Thursday Night Pursuit Race Sailing Instructions

The first Thursday night race will be a pursuit race. This is intended to be a fun, casual race to work out the kinks and get back into the racing groove. The race will count toward the Spring Series standings.

The Course

- The race will start and end at D (G13) and take a triangular route around Salem Sound inside the islands. There will be two possible courses which may be run clockwise or counter-clockwise. The JYC Race Committee will choose the course at race time. The JYC Race Committee will indicate the course on the board using the “variable marks” letters with a green placard if the marks are to be left to starboard. The possible courses are:
 1. Starting at D (G13), then to I (C5 near Coney Ledge), then to X (R12 north of Bowditch), then back to D. The course on the board will be I, X, D. The distance is 3.29nm.
 2. Starting at D (G13), then to X (R12 north of Bowditch), then to I (C5 near Coney Ledge), then back to D. The course on the board will be X, I, D with a green “marks to starboard” placard. The distance is 3.29nm.
 3. Starting at D (G13), then to S (G9 near Bakers Island), then to K (G3 near Grays Rock), then back to D. The course on the board will be S, K, D. The distance is 5.97nm.
 4. Starting at D (G13), then to K (G3 near Grays Rock), then to S (G9 near Bakers Island), then back to D. The course on the board will be K, S, D with a green “marks to starboard” placard. The distance is 5.97nm.

Handicaps

- Your handicap is based on either your PHRF Certificate, or if you do not have a certificate, a PHRF rating assigned by the JYC Race Committee.
- Handicaps result in a staggered order of starting times so that all boats have the opportunity to finish first. The order of placement is the order of finish. For Spring Series standings, boats will be scored in the order of finish for boats in their respective fleets.
- A scratch sheet for all boats that are registered for the Spring Series will be posted on jycracing.org under Thursday Series, Pursuit Race Scratch Sheet.

Starting Sequence

- All boats must have a dedicated VHF radio for contact with the JYC Race Committee during the race as well as a method of determining the time.
- The JYC Race Committee intends to begin a normal five minute sequence at 18:05:00 GPS time, so as to set the start time at 18:10:00. However, the JYC Race Committee may delay the start if appropriate.

- Start times for each boat will be given as the number of minutes and seconds after the official start time. The JYC Race Committee will use its best effort to communicate with boats via VHF to advise them of their start time.

Finishing

- All boats should finish between mark D and the signal boat regardless of the course posted and which side of the marks you round on the course

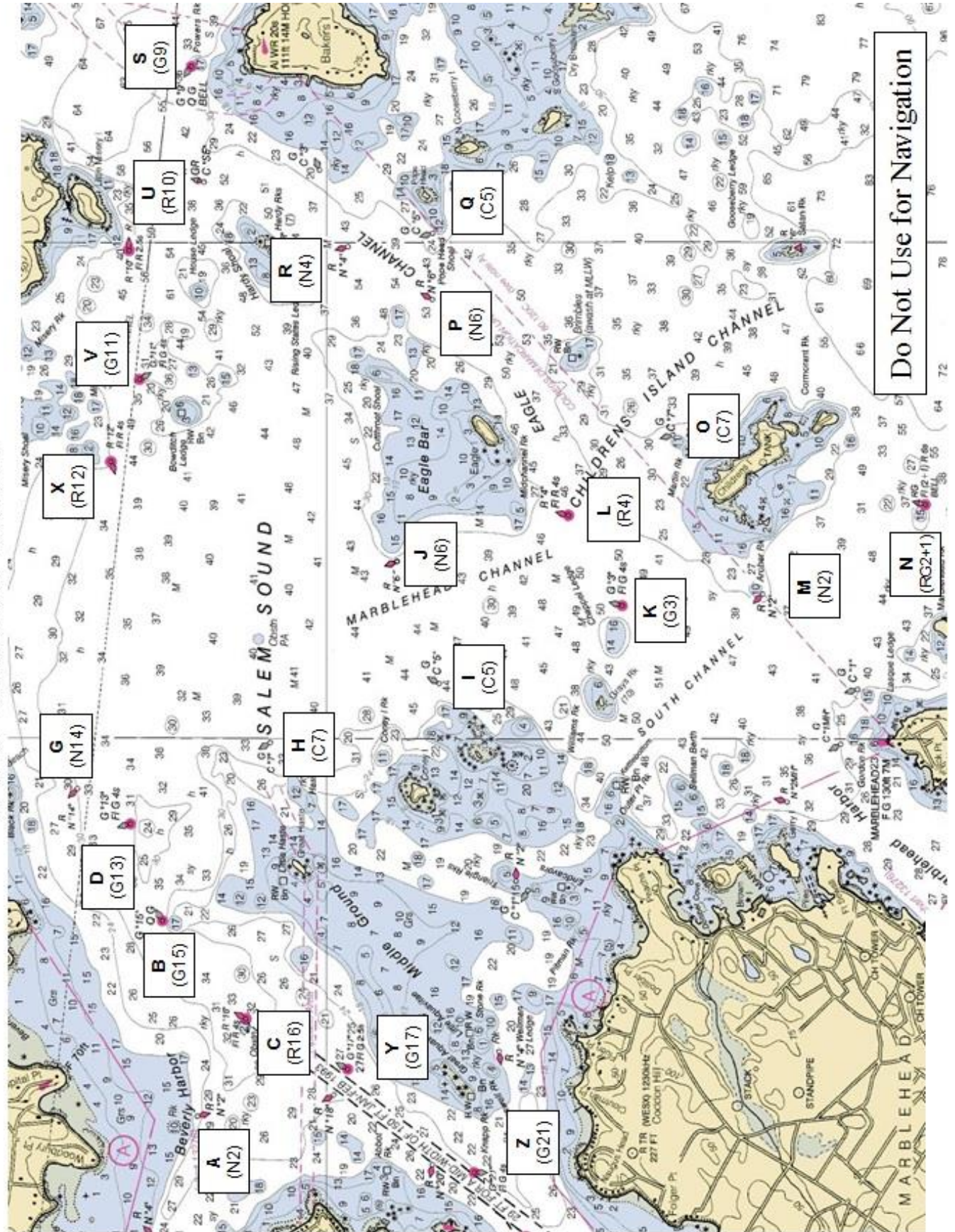
Thursday Night Pursuit Race - Offset times**SHORT course (DXID/DIXD) 3.29 nm**

Rating	Offset	Rating	Offset	Rating	Offset	Rating	Offset	Rating	Offset	Rating	Offset	Rating	Offset
260	0:00	220	2:12	180	4:23	140	6:35	100	8:46	60	10:58	20	13:10
259	0:03	219	2:15	179	4:26	139	6:38	99	8:50	59	11:01	19	13:13
258	0:07	218	2:18	178	4:30	138	6:41	98	8:53	58	11:05	18	13:16
257	0:10	217	2:21	177	4:33	137	6:45	97	8:56	57	11:08	17	13:19
256	0:13	216	2:25	176	4:36	136	6:48	96	9:00	56	11:11	16	13:23
255	0:16	215	2:28	175	4:40	135	6:51	95	9:03	55	11:14	15	13:26
254	0:20	214	2:31	174	4:43	134	6:55	94	9:06	54	11:18	14	13:29
253	0:23	213	2:35	173	4:46	133	6:58	93	9:09	53	11:21	13	13:33
252	0:26	212	2:38	172	4:50	132	7:01	92	9:13	52	11:24	12	13:36
251	0:30	211	2:41	171	4:53	131	7:04	91	9:16	51	11:28	11	13:39
250	0:33	210	2:45	170	4:56	130	7:08	90	9:19	50	11:31	10	13:42
249	0:36	209	2:48	169	4:59	129	7:11	89	9:23	49	11:34	9	13:46
248	0:39	208	2:51	168	5:03	128	7:14	88	9:26	48	11:37	8	13:49
247	0:43	207	2:54	167	5:06	127	7:18	87	9:29	47	11:41	7	13:52
246	0:46	206	2:58	166	5:09	126	7:21	86	9:32	46	11:44	6	13:56
245	0:49	205	3:01	165	5:13	125	7:24	85	9:36	45	11:47	5	13:59
244	0:53	204	3:04	164	5:16	124	7:27	84	9:39	44	11:51	4	14:02
243	0:56	203	3:08	163	5:19	123	7:31	83	9:42	43	11:54	3	14:06
242	0:59	202	3:11	162	5:22	122	7:34	82	9:46	42	11:57	2	14:09
241	1:03	201	3:14	161	5:26	121	7:37	81	9:49	41	12:01	1	14:12
240	1:06	200	3:17	160	5:29	120	7:41	80	9:52	40	12:04	0	14:15
239	1:09	199	3:21	159	5:32	119	7:44	79	9:55	39	12:07	-1	14:19
238	1:12	198	3:24	158	5:36	118	7:47	78	9:59	38	12:10	-2	14:22
237	1:16	197	3:27	157	5:39	117	7:50	77	10:02	37	12:14	-3	14:25
236	1:19	196	3:31	156	5:42	116	7:54	76	10:05	36	12:17	-4	14:29
235	1:22	195	3:34	155	5:45	115	7:57	75	10:09	35	12:20	-5	14:32
234	1:26	194	3:37	154	5:49	114	8:00	74	10:12	34	12:24	-6	14:35
233	1:29	193	3:40	153	5:52	113	8:04	73	10:15	33	12:27	-7	14:38
232	1:32	192	3:44	152	5:55	112	8:07	72	10:19	32	12:30	-8	14:42
231	1:35	191	3:47	151	5:59	111	8:10	71	10:22	31	12:33	-9	14:45
230	1:39	190	3:50	150	6:02	110	8:13	70	10:25	30	12:37	-10	14:48
229	1:42	189	3:54	149	6:05	109	8:17	69	10:28	29	12:40	-11	14:52
228	1:45	188	3:57	148	6:08	108	8:20	68	10:32	28	12:43	-12	14:55
227	1:49	187	4:00	147	6:12	107	8:23	67	10:35	27	12:47	-13	14:58
226	1:52	186	4:03	146	6:15	106	8:27	66	10:38	26	12:50	-14	15:01
225	1:55	185	4:07	145	6:18	105	8:30	65	10:42	25	12:53	-15	15:05
224	1:58	184	4:10	144	6:22	104	8:33	64	10:45	24	12:56	-16	15:08
223	2:02	183	4:13	143	6:25	103	8:37	63	10:48	23	13:00	-17	15:11
222	2:05	182	4:17	142	6:28	102	8:40	62	10:51	22	13:03	-18	15:15
221	2:08	181	4:20	141	6:32	101	8:43	61	10:55	21	13:06	-19	15:18

Thursday Night Pursuit Race - Offset times**LONG course (DSKD/DKSD) 5.97 nm**

Rating	Offset	Rating	Offset	Rating	Offset	Rating	Offset	Rating	Offset	Rating	Offset	Rating	Offset
260	0:00	220	3:59	180	7:58	140	11:56	100	15:55	60	19:54	20	23:53
259	0:06	219	4:05	179	8:04	139	12:02	99	16:01	59	20:00	19	23:59
258	0:12	218	4:11	178	8:10	138	12:08	98	16:07	58	20:06	18	24:05:00
257	0:18	217	4:17	177	8:16	137	12:14	97	16:13	57	20:12	17	24:11:00
256	0:24	216	4:23	176	8:21	136	12:20	96	16:19	56	20:18	16	24:17:00
255	0:30	215	4:29	175	8:27	135	12:26	95	16:25	55	20:24	15	24:23:00
254	0:36	214	4:35	174	8:33	134	12:32	94	16:31	54	20:30	14	24:29:00
253	0:42	213	4:41	173	8:39	133	12:38	93	16:37	53	20:36	13	24:35:00
252	0:48	212	4:47	172	8:45	132	12:44	92	16:43	52	20:42	12	24:41:00
251	0:54	211	4:53	171	8:51	131	12:50	91	16:49	51	20:48	11	24:47:00
250	1:00	210	4:59	170	8:57	130	12:56	90	16:55	50	20:54	10	24:52:00
249	1:06	209	5:04	169	9:03	129	13:02	89	17:01	49	21:00	9	24:58:00
248	1:12	208	5:10	168	9:09	128	13:08	88	17:07	48	21:06	8	25:04:00
247	1:18	207	5:16	167	9:15	127	13:14	87	17:13	47	21:12	7	25:10:00
246	1:24	206	5:22	166	9:21	126	13:20	86	17:19	46	21:18	6	25:16:00
245	1:30	205	5:28	165	9:27	125	13:26	85	17:25	45	21:24	5	25:22:00
244	1:36	204	5:34	164	9:33	124	13:32	84	17:31	44	21:30	4	25:28:00
243	1:41	203	5:40	163	9:39	123	13:38	83	17:37	43	21:35	3	25:34:00
242	1:47	202	5:46	162	9:45	122	13:44	82	17:43	42	21:41	2	25:40:00
241	1:53	201	5:52	161	9:51	121	13:50	81	17:49	41	21:47	1	25:46:00
240	1:59	200	5:58	160	9:57	120	13:56	80	17:55	40	21:53	0	25:52:00
239	2:05	199	6:04	159	10:03	119	14:02	79	18:01	39	21:59	-1	25:58:00
238	2:11	198	6:10	158	10:09	118	14:08	78	18:07	38	22:05	-2	26:04:00
237	2:17	197	6:16	157	10:15	117	14:14	77	18:13	37	22:11	-3	26:10:00
236	2:23	196	6:22	156	10:21	116	14:20	76	18:18	36	22:17	-4	26:16:00
235	2:29	195	6:28	155	10:27	115	14:26	75	18:24	35	22:23	-5	26:22:00
234	2:35	194	6:34	154	10:33	114	14:32	74	18:30	34	22:29	-6	26:28:00
233	2:41	193	6:40	153	10:39	113	14:38	73	18:36	33	22:35	-7	26:34:00
232	2:47	192	6:46	152	10:45	112	14:44	72	18:42	32	22:41	-8	26:40:00
231	2:53	191	6:52	151	10:51	111	14:50	71	18:48	31	22:47	-9	26:46:00
230	2:59	190	6:58	150	10:57	110	14:56	70	18:54	30	22:53	-10	26:52:00
229	3:05	189	7:04	149	11:03	109	15:01	69	19:00	29	22:59	-11	26:58:00
228	3:11	188	7:10	148	11:09	108	15:07	68	19:06	28	23:05	-12	27:04:00
227	3:17	187	7:16	147	11:15	107	15:13	67	19:12	27	23:11	-13	27:10:00
226	3:23	186	7:22	146	11:21	106	15:19	66	19:18	26	23:17	-14	27:16:00
225	3:29	185	7:28	145	11:27	105	15:25	65	19:24	25	23:23	-15	27:22:00
224	3:35	184	7:34	144	11:33	104	15:31	64	19:30	24	23:29	-16	27:28:00
223	3:41	183	7:40	143	11:38	103	15:37	63	19:36	23	23:35	-17	27:34:00
222	3:47	182	7:46	142	11:44	102	15:43	62	19:42	22	23:41	-18	27:40:00
221	3:53	181	7:52	141	11:50	101	15:49	61	19:48	21	23:47	-19	27:46:00

JYC Variable Marks



Do Not Use for Navigation